

Muroc Joint Unified School District

2016 General Obligation Bond Authorization

Measure M



Committee Members:

Donald Core, Natalie Dadey, LaHoma Lopez,
James Lyon, George Rief Jr., Jaime White,
Thomas Wolfe

Bond Oversight Committee Report

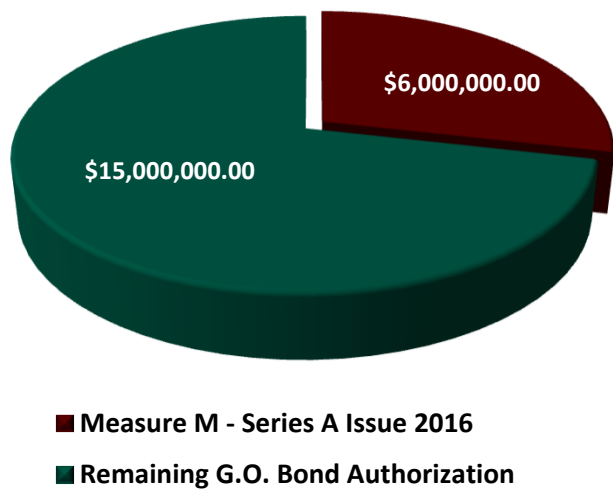
December 13, 2017

2016 General Obligation Bond Measure

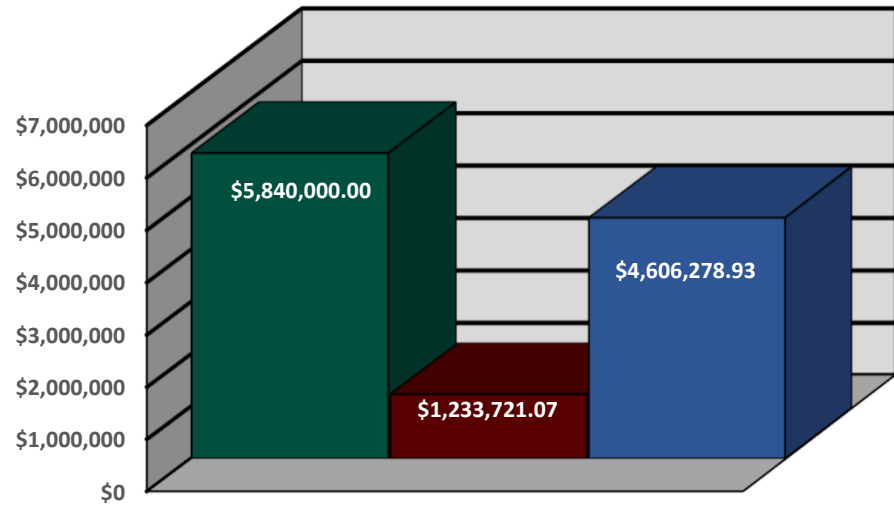
Measure M Overview

On November 8, 2016, the voters of the Muroc Joint Unified School District (the “District”) authorized Measure M under the Proposition 39 statutes. Measure M authorized \$21 million in General Obligation Bonds (the “Bonds”). The proceeds of the Bonds are intended to be used for the repair, upgrading, acquisition, construction and equipping of District property and school facilities

\$21 Million Measure M Breakdown



Measure M G.O. Bond Balances



■ Measure EE Series A ■ Project Commitments ■ Remaining Balance

* \$160,000 of the Bond proceeds were used for closing costs

2016 General Obligation Bond Measure

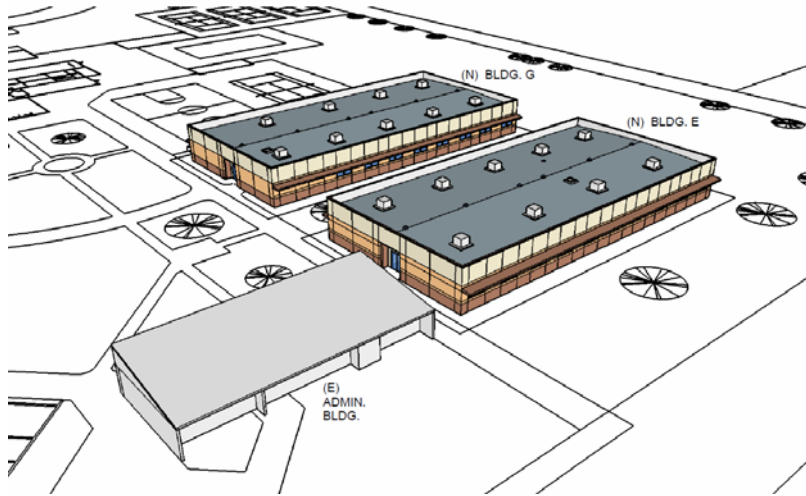
Ongoing Projects Summary

PROJECT	ENCUMBERED	DISBURSEMENT	ENC. BALANCE
Boron High School	1,048,789.83	(1,048,789.83)	0.00
West Boron Elementary	184,931.24	(184,931.24)	0.00
TOTAL	\$1,233,721.07	(\$1,233,721.07)	\$0.00

Financial Activity as of 12/01/17

2016 General Obligation Bond Measure

Boron High School Overview



SCOPE OF WORK

Phase I

- DESIGN
- INFRASTRUCTURE
- UTILITIES/REQUIRED SYSTEMS
- NEW CLASSROOMS

Phase II

- MODERNIZATION

VENDOR	ENCUMBRANCE	EXPENDITURE	BALANCE	SCOPE
California Geological Survey	\$1,800.00	(\$1,800.00)	\$0.00	Geological Surveying
Caston Inc	\$4,772.50	(\$4,772.50)	\$0.00	Drywall & Plastering
Division of the State	\$135,750.00	(\$135,750.00)	\$0.00	Plan Check Fees
Enviornmental Health	\$860.00	(\$860.00)	\$0.00	Other Costs
Epic Engineers	\$12,000.00	(\$12,000.00)	\$0.00	Engineering Costs
Force Plumbing	\$5,600.00	(\$5,600.00)	\$0.00	Plumbing Costs
ITsavvy LLC	\$1,292.23	(\$1,292.23)	\$0.00	IT Costs
John R Byerly Inc	\$20,630.00	(\$20,630.00)	\$0.00	Testing & Inspection
Jts Modular Inc.	\$147,250.00	(\$147,250.00)	\$0.00	Modular Construction
Pro Circuit Electric	\$3,500.00	(\$3,500.00)	\$0.00	Electric Costs
Pro-Craft Construction	\$6,449.28	(\$6,449.28)	\$0.00	Construction Costs
WLC Architects	\$590,974.32	(\$590,974.32)	\$0.00	Architect Costs
WLC Construction Service	\$117,911.50	(\$117,911.50)	\$0.00	Construction Costs
TOTALS	\$1,048,789.83	(\$1,048,789.83)	\$0.00	

Financial Activity as of 12/01/17



2016 General Obligation Bond Measure

West Boron Elementary



SCOPE OF WORK

Phase III

- DESIGN
- INFRASTRUCTURE
- UTILITIES/REQUIRED SYSTEMS

VENDOR	ENCUMBRANCE	EXPENDITURE	BALANCE	SCOPE
California Geological Survey	\$1,800.00	(\$1,800.00)	\$0.00	Geological Surveying
Epic Engineers	\$13,500.00	(\$13,500.00)	\$0.00	Engineering Costs
John R Byerly Inc	\$6,595.00	(\$6,595.00)	\$0.00	Testing & Inspection
L.Y. Environmental	\$16,400.00	(\$16,400.00)	\$0.00	Environmental Consulting
Pro-Craft Construction	\$4,786.24	(\$4,786.24)	\$0.00	Construction Costs
WLC Architects	\$141,850.00	(\$141,850.00)	\$0.00	Architect Costs
TOTALS	\$184,931.24	(\$184,931.24)	\$0.00	

Financial Activity as of 12/01/17